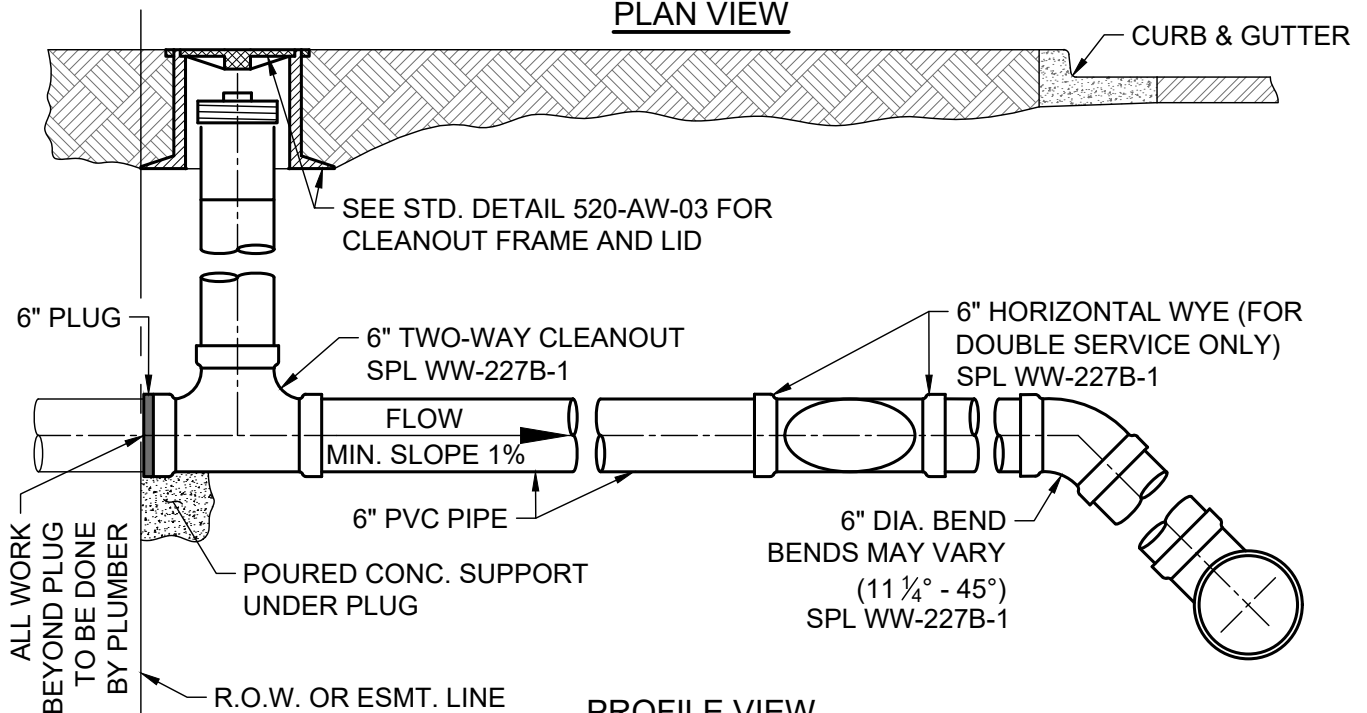


* OFFSET FROM PROPERTY LINE IS FOR DOUBLE WASTEWATER SERVICE INSTALLATION ONLY.

WHERE WATER & WASTEWATER SERVICES ARE INSTALLED ON A COMMON LOT LINE, SEE DETAIL 520-AW-01A

PLAN VIEW

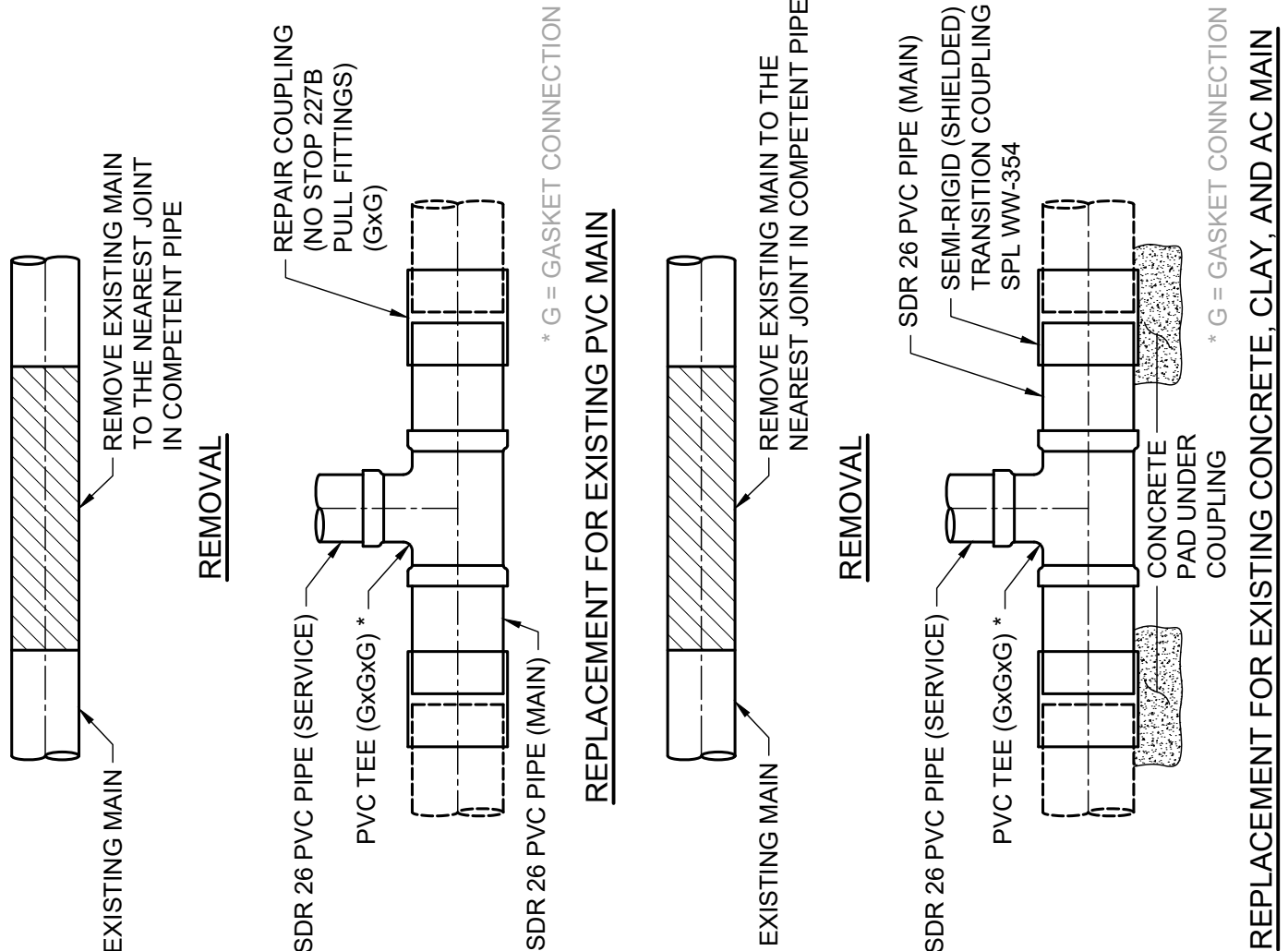


PROFILE VIEW

<p>CITY OF AUSTIN AUSTIN WATER</p>	<p>SINGLE AND DOUBLE WASTEWATER SERVICE CONNECTION</p>	
<p>RECORD COPY SIGNED JEFF A. KYLE</p>	<p>THE ENGINEER/ARCHITECT ASSUMES RESPONSIBILITY FOR APPROPRIATE USE OF THIS STANDARD. MODIFICATIONS TO THIS STANDARD ARE PROHIBITED.</p>	<p>STANDARD NO. 520-AW-01C 1 OF 4</p>

NOTES:

1. DURING SUBDIVISION CONSTRUCTION, UTILITY CONTRACTOR INSTALLS WASTEWATER TEE CONNECTION TO MAIN, 6" STUB, HORIZONTAL WYE FOR DOUBLE SERVICES, 6" SERVICE BRANCH WITH TWO-WAY CLEANOUT(S) AND RISER, FRAME, AND COVER. CLEANOUT(S) TO BE PLUGGED AT PROPERTY LINE OR EASEMENT LINE END. ALL WASTEWATER PIPING SHALL HAVE ELASTOMERIC GASKET TYPE JOINTS AND SLOPE DOWNWARD TO MAIN 1% MIN. TO 45° MAX. DEPTH OF SERVICE AT PROPERTY LINE WILL BE SHOWN ON PLANS BY ENGINEER IF GREATER THAN 4', OTHERWISE THE INSTALLED DEPTH WILL BE 4' MIN. AND 6' MAX. AT PROPERTY LINE. IF WASTEWATER SERVICE LINE TO MAIN REQUIRES DEFLECTION EXCEEDING 45°, SEE SHEET 3 OF 4.
2. PIPING IN STREET RIGHT-OF-WAY AND IN EASEMENT AREA SHALL BE BEDDED IN GRANULAR MATERIALS AS REQUIRED BY CITY OF AUSTIN STANDARD SPECIFICATION 510.3 (14); MATERIALS SHALL BE AS SPECIFIED IN 510.2 (2)(A) AND (3)(B); BACKFILL ABOVE THE GRANULAR BEDDING SHALL BE AS REQUIRED BY SECTION 510.3 (25). SERVICE LINES IN THESE AREAS SHALL HAVE A MIN. COVER BELOW FINAL STREET GRADE OF 42".
3. PLUMBER SHALL REMOVE PLUG AND CONNECT TO TWO-WAY CLEANOUT. NO CONNECTION TO CLEANOUT STACK IS ALLOWED.



CITY OF AUSTIN
AUSTIN WATER

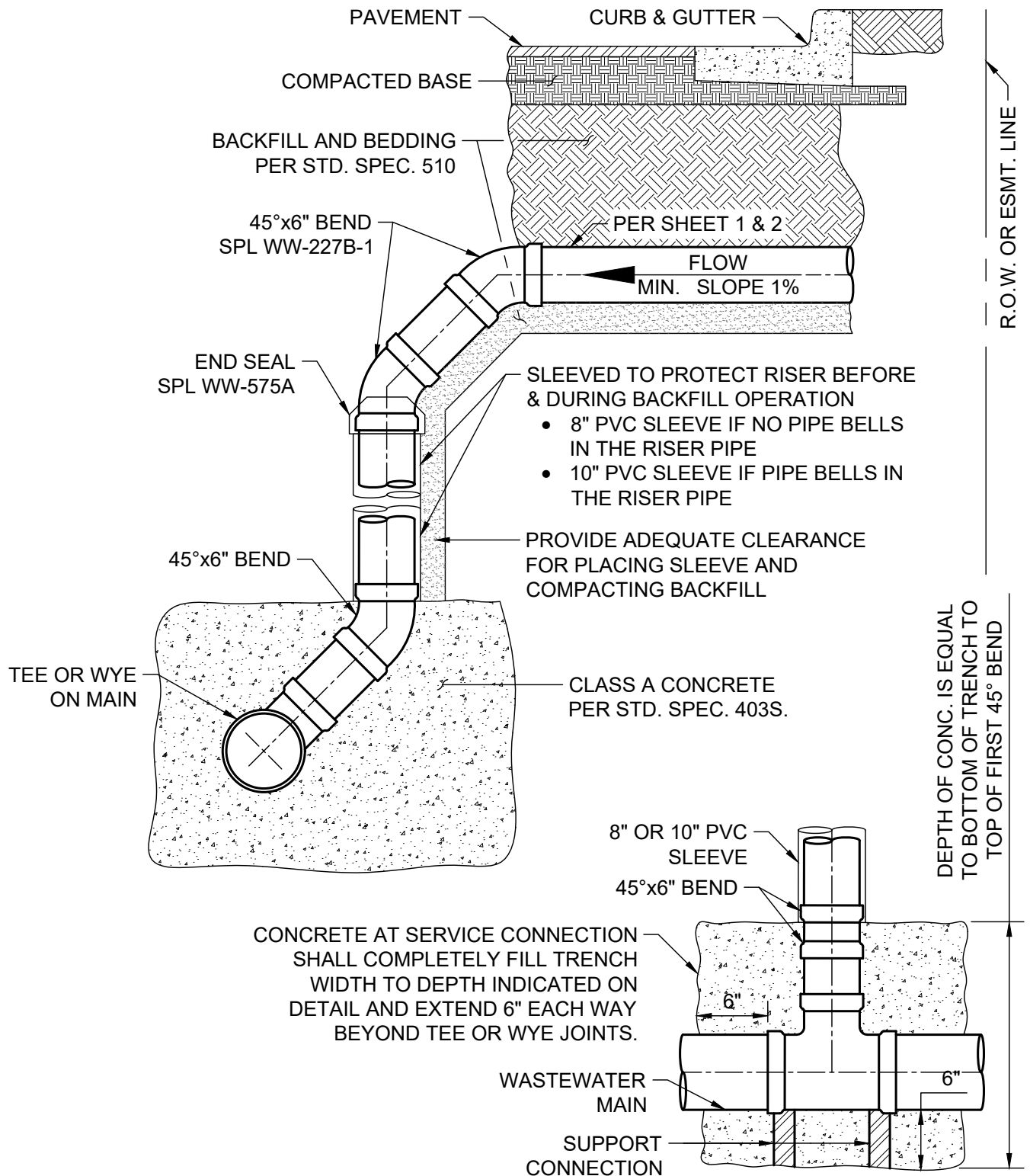
RECORD COPY SIGNED
JEFF A. KYLE

11/07/2018
ADOPTED

SINGLE AND DOUBLE WASTEWATER
SERVICE CONNECTION

THE ENGINEER/ARCHITECT ASSUMES
RESPONSIBILITY FOR APPROPRIATE USE
OF THIS STANDARD. MODIFICATIONS TO
THIS STANDARD ARE PROHIBITED.

STANDARD NO.
520-AW-01C
2 OF 4

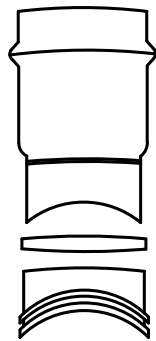
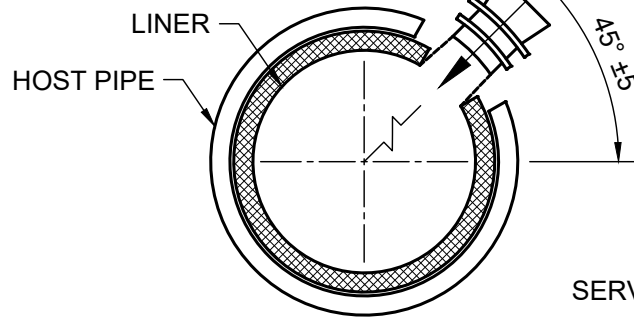


CONCRETE ENCASEMENT FOR SERVICE CONNECTION

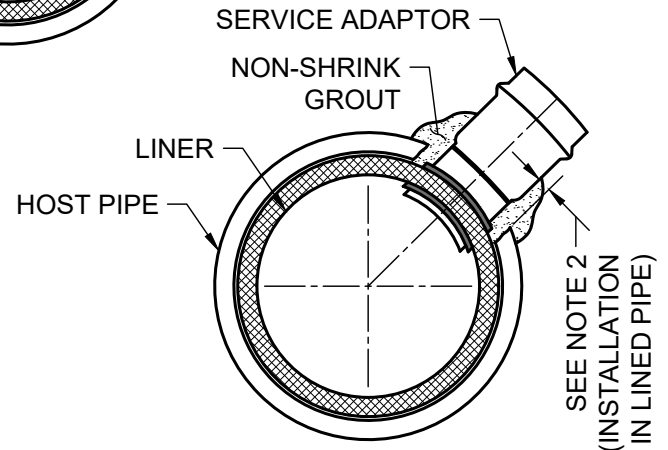
DEEP SERVICE CONNECTION

CITY OF AUSTIN AUSTIN WATER	SINGLE AND DOUBLE WASTEWATER SERVICE CONNECTION	
RECORD COPY SIGNED <u>JEFF A. KYLE</u>	THE ENGINEER/ARCHITECT ASSUMES RESPONSIBILITY FOR APPROPRIATE USE OF THIS STANDARD. MODIFICATIONS TO THIS STANDARD ARE PROHIBITED.	STANDARD NO. 520-AW-01C 3 OF 4
11/07/2018 ADOPTED		

SERVICE ADAPTOR CONSISTING OF
SINGLE-BODY GASKETED BELL
HAVING SDR 26 PVC HUB, RUBBER
SLEEVE AND STAINLESS STEEL BAND.
SEE SPL WW-227D & DETAIL "A"



DETAIL "A"



DETAIL "B"

INSTALLATION IN LINED PIPE:

1. MARK LOCATION OF TAP.
2. BREAK & REMOVE HOST PIPE SO THAT OPENING IS AT LEAST 2" BUT NO MORE THAN 3" WIDER THAN DIAMETER OF THE SERVICE ADAPTOR.
3. DO NOT DAMAGE LINER.
4. CORE HOLE THROUGH LINER USING ADAPTOR MANUFACTURER RECOMMENDED BIT.
5. INSTALL SERVICE ADAPTOR.
6. HOLES CUT IN HOST PIPE SHALL BE PACKED WITH NON-SHRINK GROUT (ASTM C1107 GRADE). SEE DETAIL "B"

NOTES:

1. USE ONLY TO TAP EXISTING LINED PIPE.
2. SEE APPROPRIATE STD. FOR SERVICE LINE INFORMATION.
3. THE EDGE OF THE CORE HOLE MUST BE AT LEAST 3' FROM THE ENDS OF THE PIPE, ANY OTHER CORE SERVICE CONNECTIONS, AND ANY FITTINGS.
4. FOR DEEP SERVICE APPLICATIONS SEE SHEET 3 OF 4, EXCEPT SUBSTITUTE A CORED HOLE, AND SERVICE ADAPTOR FOR THE TEE OR WYE.
5. SERVICE CONNECTIONS TO MANHOLES MUST BE MADE USING A PIPE-TO-MANHOLE CONNECTOR WHICH LIMITS THE PIPE SLOPE INTO THE MANHOLE TO 12% MAX.

6" WASTEWATER CONNECTION TO EXISTING LINED MAIN

CITY OF AUSTIN AUSTIN WATER	SINGLE AND DOUBLE WASTEWATER SERVICE CONNECTION	
RECORD COPY SIGNED <u>JEFF A. KYLE</u>	THE ENGINEER/ARCHITECT ASSUMES RESPONSIBILITY FOR APPROPRIATE USE OF THIS STANDARD. MODIFICATIONS TO THIS STANDARD ARE PROHIBITED.	STANDARD NO. 520-AW-01C 4 OF 4

11/07/2018
ADOPTED